

edilportale[®]

TOUR 2017

Ristrutturazione, riqualificazione
energetica, comfort abitativo,
adeguamento antisismico, BIM



Roofingreen



Catania, 22 Marzo 2017

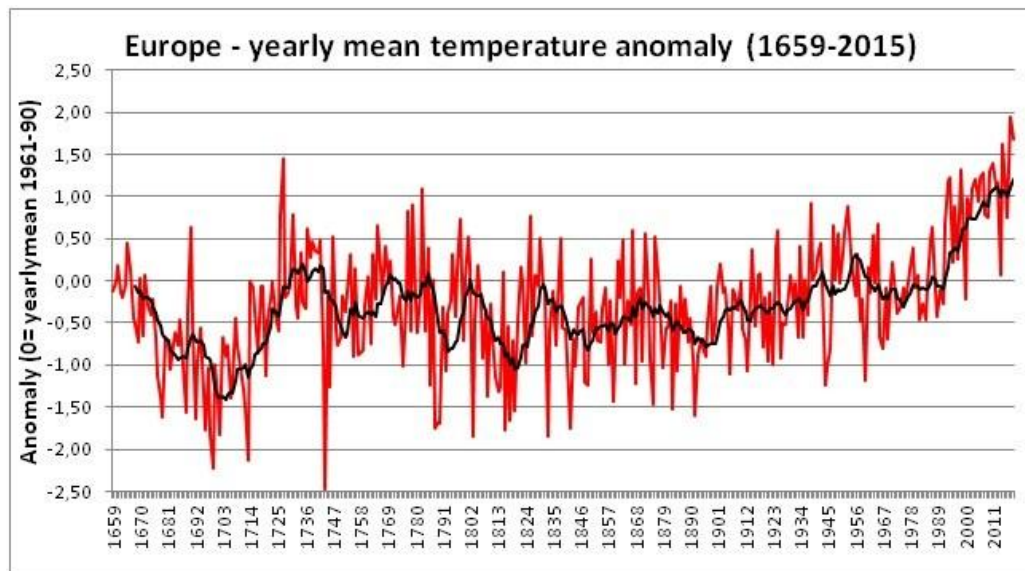
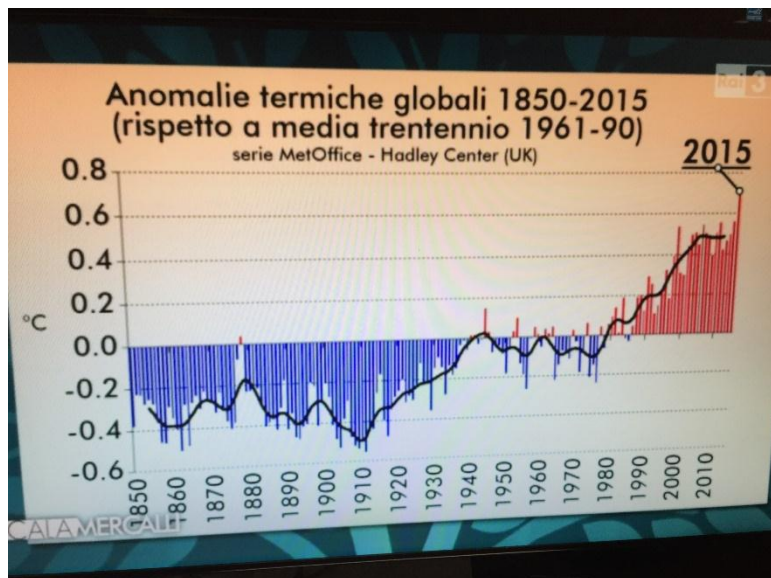
***UN MODELLO ENERGETICO SOSTENIBILE PER
LE GENERAZIONI del III MILLENNIO***

Prof. Ing. Rosario Lanzafame

Ordinario di Sistemi per l'Energia e l'Ambiente

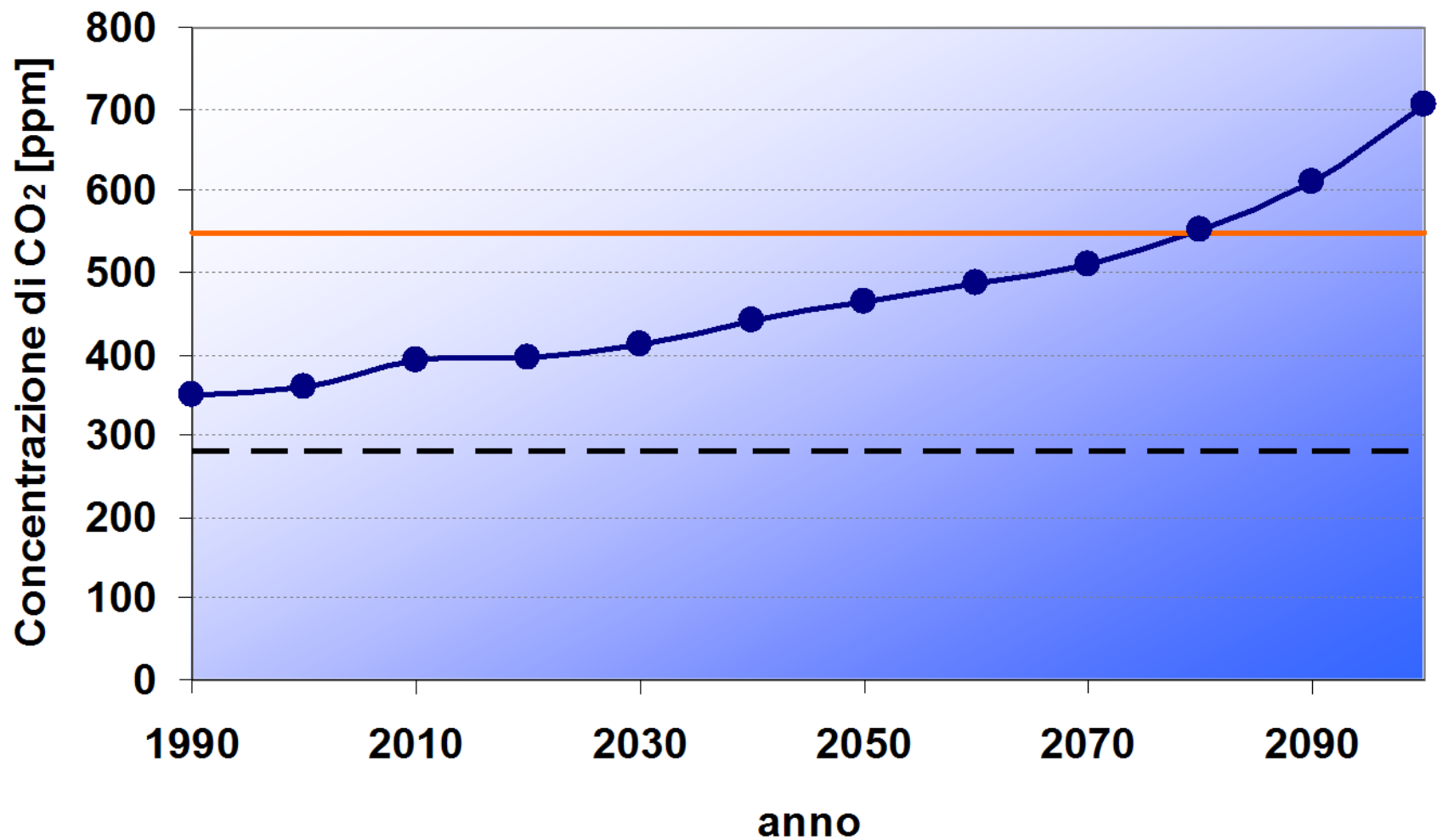
Dipartimento di Ingegneria Civile e Architettura

Università degli Studi di Catania











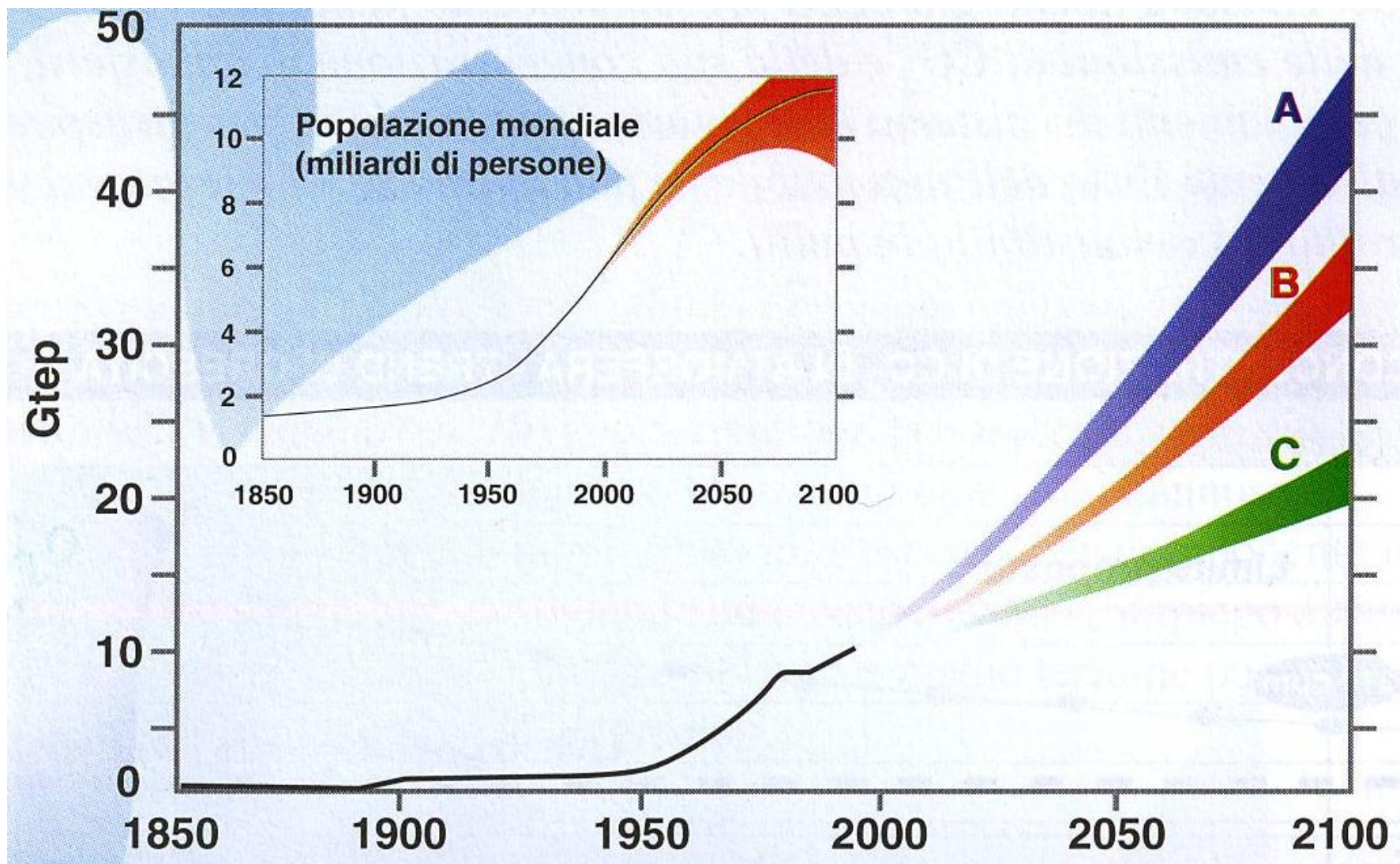


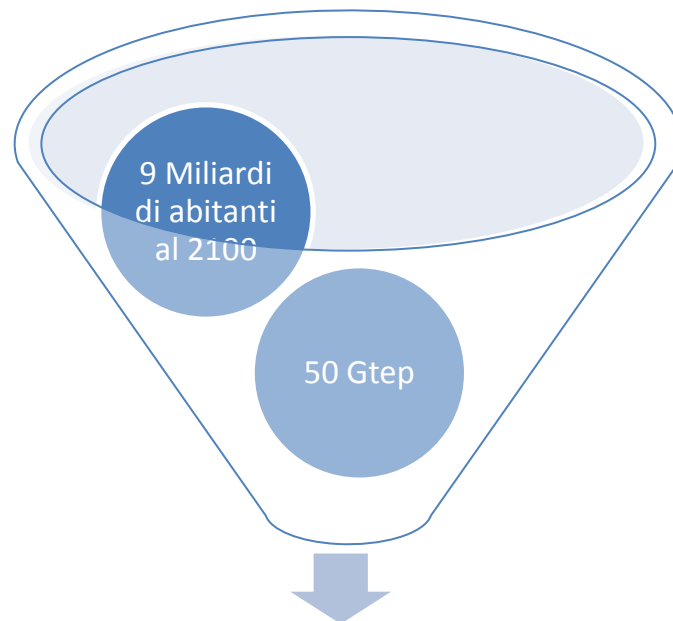
The concept of global warming was created by and for the Chinese in order to make U.S. manufacturing non-competitive.

Donald Trump, President of the United States

@VeronicaClima

TRUMP





$$E = 26,5 \text{ MJ}/(\text{h person})$$

«media di impegno energetico annuo per ogni abitante del Pianeta»

Potenza mediamente impegnata per abitante del Pianeta (Democrazia Energetica)

$$P = 7,3 \text{ kW/person}$$

Fabbisogno Nutrizionale
Energetico nelle 24 ore
«media giornaliera Umana»

$$P_N = 2.500 \text{ kcal}/(\text{day person})$$



$$P_N = 121 \text{ W/person}$$

$$P = 7.374 \text{ W/person}$$

$$P_N = 121,12 \text{ W/person}$$

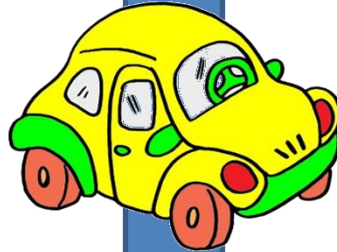
=

60,882

30.000 km/y

36,76 kW (50 CV)

50 km/h



$P_M = 2,5 \text{ kW/person}$

$P_M = 2.518 \text{ W/person}$

$P = 7.374 \text{ W/person}$

0,34

$P_M = 2.518 \text{ W/person}$

$P_N = 121 \text{ W/person}$

21



$$E_D = 52 \text{ MJ}/(\text{h Inhabitant Dubai})$$

$$P = 26,5 \text{ MJ}/(\text{h person})$$

=

1,9

$$E_D = 14.500 \text{ W}/(\text{h Inhabitant Dubai})$$

$$P = 121 \text{ W}/\text{person}$$

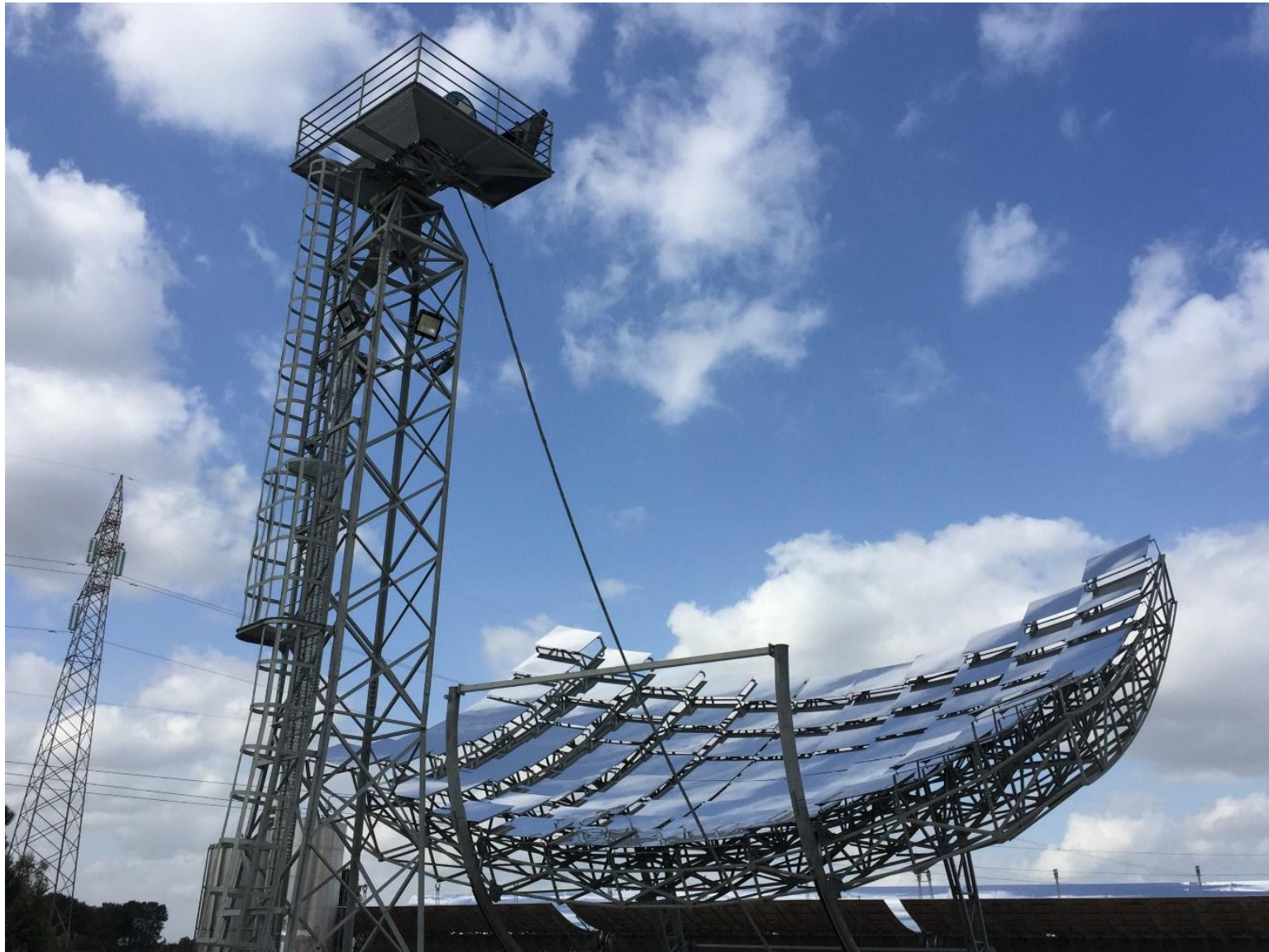
=

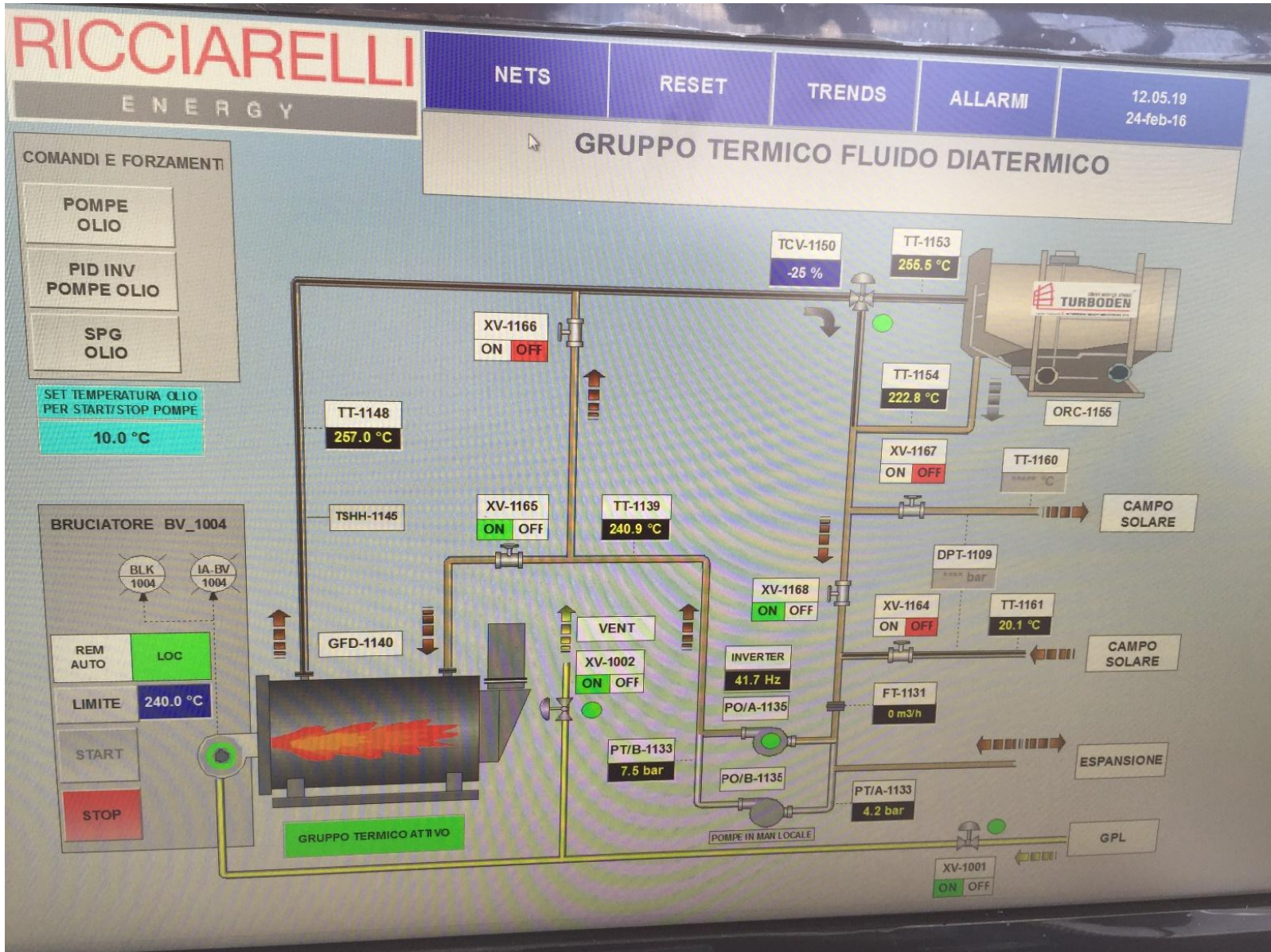
120

Uno scandalo energetico!!!

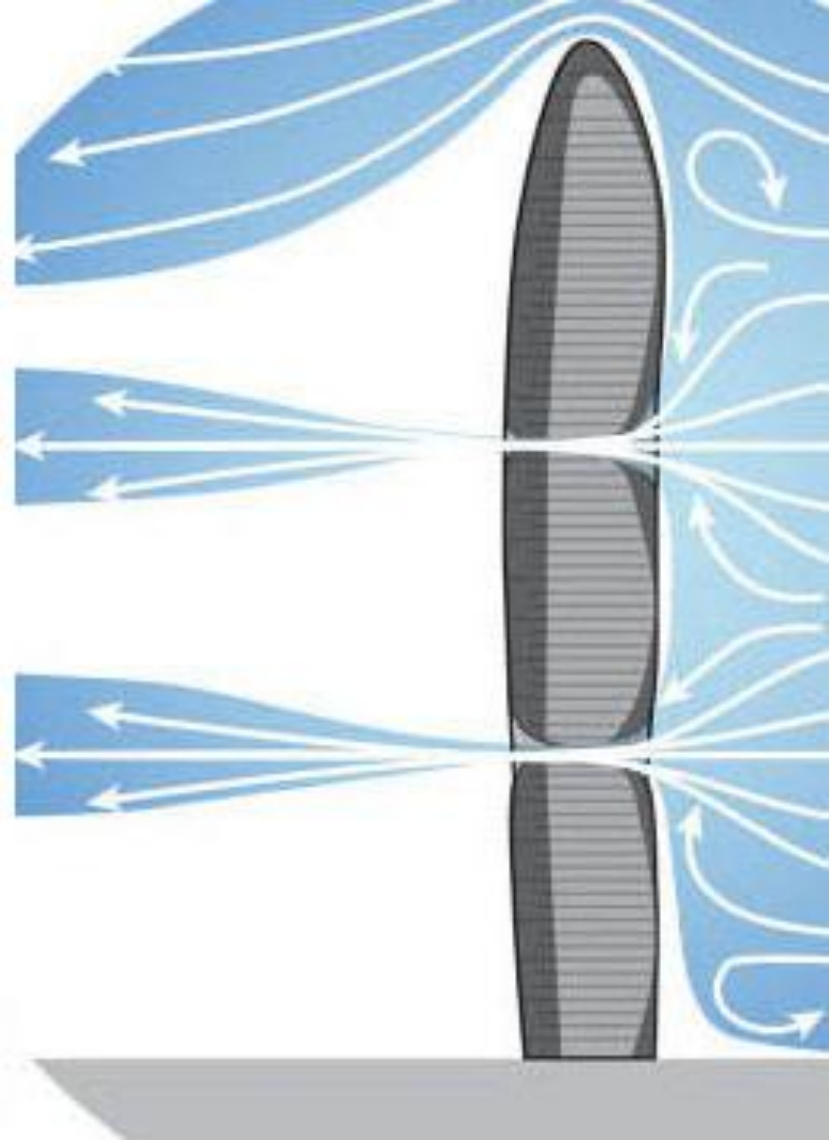
















Lettera Enciclica «*Laudato Sì*» del Santo Padre Francesco sulla cura della Casa Comune

